

Mathematics

SESSION 1

You may use your MCAS ruler during this session.
You may **not** use a calculator during this session.



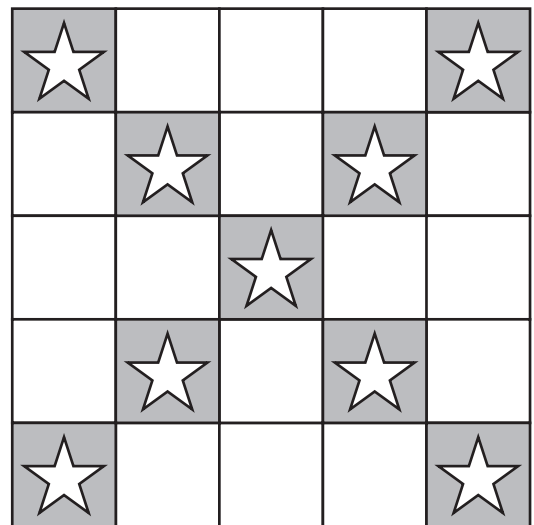
DIRECTIONS

This session contains twelve multiple-choice questions, two short-answer questions, and three open-response questions. Mark your answers to these questions in the spaces provided in your Student Answer Booklet.

1 Since $6 \times 3 = 18$, what is 600×3 ?

- A. 180
- B. 1,800
- C. 18,000
- D. 180,000

2 Yvonne used plain tiles and tiles with stars to make the design shown below.

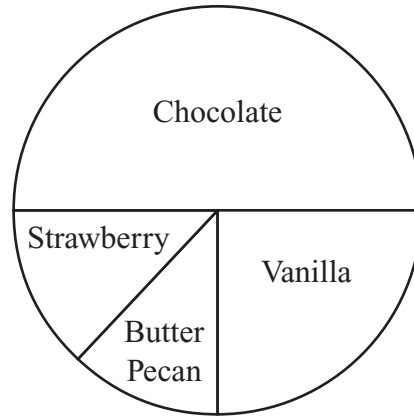


Which of the following fractions represents the part of the design that is made of tiles with stars?

- A. $\frac{1}{25}$
- B. $\frac{1}{9}$
- C. $\frac{9}{16}$
- D. $\frac{9}{25}$

- 3 Monika made the circle graph below to display information about the favorite ice cream flavors of the fourth-grade students in her school.

Students' Favorite Ice Cream Flavors



Which set of data below is best represented by the circle graph?

A. **Students' Favorite Ice Cream Flavors**

Flavor	Number of Students
Chocolate	15
Vanilla	10
Butter Pecan	4
Strawberry	15

C. **Students' Favorite Ice Cream Flavors**

Flavor	Number of Students
Chocolate	50
Vanilla	25
Butter Pecan	12
Strawberry	13

B. **Students' Favorite Ice Cream Flavors**

Flavor	Number of Students
Chocolate	25
Vanilla	25
Butter Pecan	25
Strawberry	25

D. **Students' Favorite Ice Cream Flavors**

Flavor	Number of Students
Chocolate	10
Vanilla	20
Butter Pecan	5
Strawberry	15

- 4 Lisa measured the length and width of the rectangular floor of her room. She used the measurements to find the area of the floor.

Which of the following could be the area of the floor of Lisa's room?

- A. 120 square feet
- B. 120 cubic feet
- C. 120 inches
- D. 120 yards