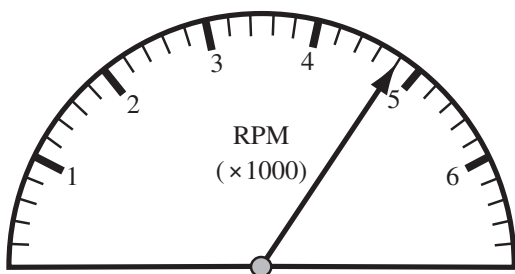


Malden does Math! -- Grade 8, 2003

You may use your reference sheet during this session.
You may **not** use a calculator during this session.



- 1 The figure below shows an RPM gauge.



How many RPMs is the gauge registering?

- A. 44
- B. 48
- C. 4080
- D. 4800

- 2 Which of the following statements is **false**?

- A. $(-12)(-12)(-12) = 3(-12)$
- B. $12(4 - 1) = 12(4) - 12(1)$
- C. $12 + (4 - 1) = (12 + 4) - 1$
- D. $-12 + 12 = 12 + (-12)$

